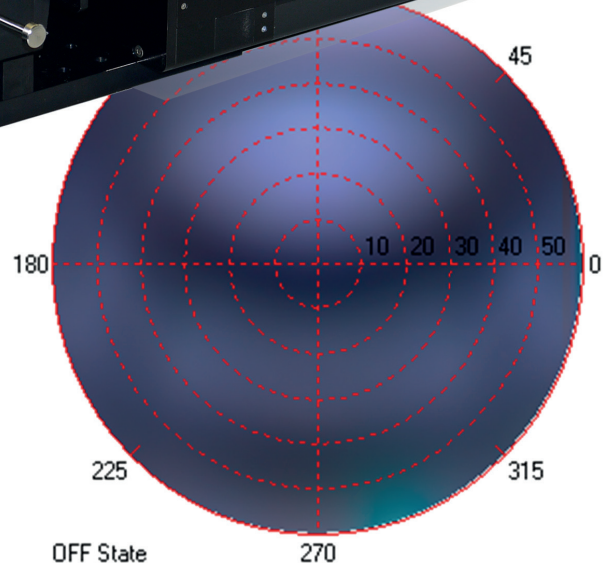
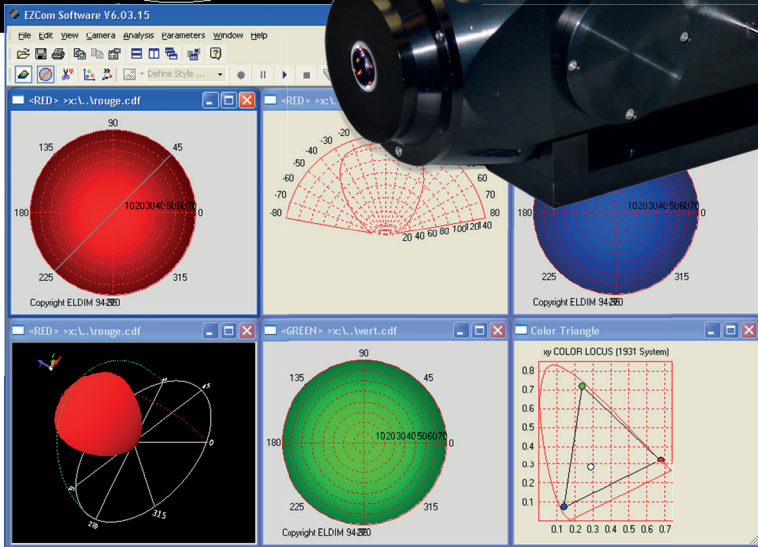
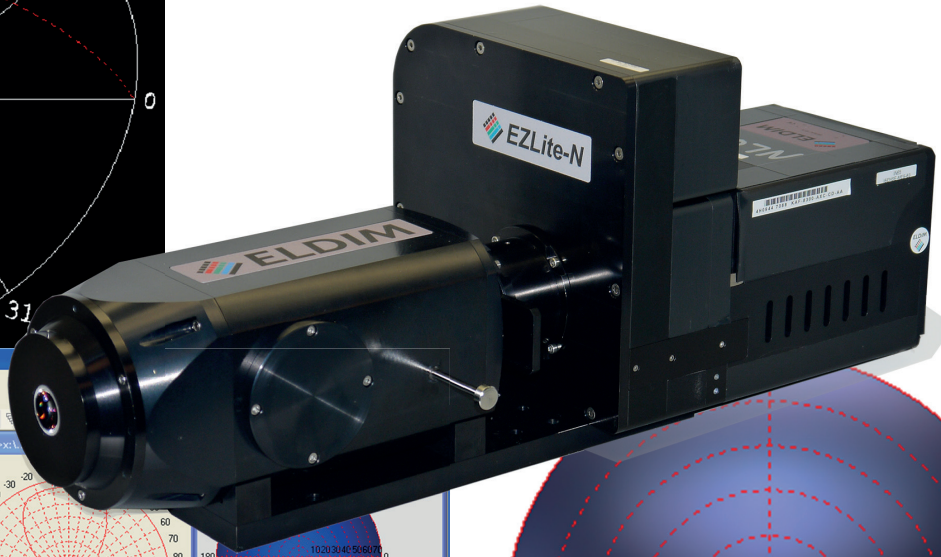
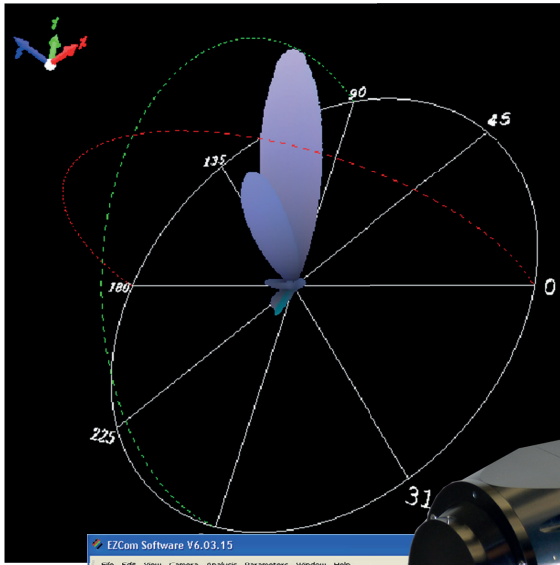


# EZLite-N



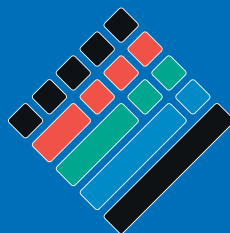
## FEATURES

- Color measurements in less than 30s
- High color and luminance accuracy
- Viewing angle aperture :  $\pm 60^\circ$
- Angular resolution :  $0.7^\circ$
- 8Mpix Cooled CCD Sensor
- Non-contact measurements

EZLite-N allows getting reliable viewing angle luminance and color data. It provides fast and accurate measurements of the full viewing cone with high angular resolution. EZLite-N measures a  $\pm 60^\circ$  viewing angle luminance map in less than 10s.

## APPLICATIONS

- Viewing angle analysis in Q&A
- VESA/ICDM-IDMS standards compliance tests
- Goniometric types measurements



**ELDIM**

**OPTICAL METROLOGY FOR DISPLAYS**

Specifications		EZLite-N
Field coverage	Incident angle Azimuth angle	0-60° 0-360°
Measuring area	Maximum diameter Minimum diameter	2mm 166µm
Optimum distance	Ensure light coming from same spot at any angle	4.5mm
Sensor	Peltier cooled CCD Resolution A/D converter	Yes 8M 14 bits
Neutral densities	For luminance adjustment Selection mode	0.5, 1, 2, 3 Automated
Chromaticity	Color Filters Additional Filters	5 (*) Any type
Measurement Modes	Luminance Chromaticity Reflective (option)	Yes Yes Full diffused or collimated beam illumination
Luminance Range	Minimum (cd/m <sup>2</sup> ) Maximum (cd/m <sup>2</sup> ) - on option	0.001 more than 800 000 cd/m <sup>2</sup> (**2)
Accuracy	Angular position Angular resolution Luminance Chromaticity (x,y) RMS	±0.5° ±0.75° ±3% (**3) 0.002 (**4)
Repeatability	Luminance Chromaticity (x,y) RMS	±0.05% (**5) 0.0001 (**5)
Measurement time	Luminance Chromaticity	< 10s (**6) < 30s (**6)
Use condition	EZLite-N EZLite-NG	0°C to 30°C non condensing -40°C to +85°C non condensing

(\*) All the systems use 5 color filters matched on the CCD response (2 for X, 2 for Y and 1 for Z)

(\*\*2) Maximum luminance is given for the maximum spot diameter

(\*\*3) The accuracy is guarantied for any type of color stimuli in contrast to competitors that generally guaranty only reference white. The luminance accuracy is guarantied for a luminance higher than 50cd/m<sup>2</sup>.

(\*\*4) For A type illuminant

(\*\*5) For a luminance higher than 50Cd/m<sup>2</sup> based on 100pixels

(\*\*6) Measurement times are highly dependent on the target and on the conditions. Given times are for a source with luminance level higher than 50Cd/m<sup>2</sup> and already determined exposition times for all the filters.

### EZLite-N Outer dimension (unit mm)

