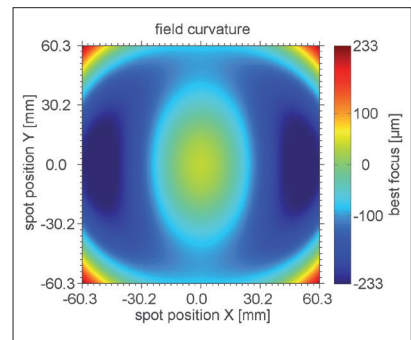
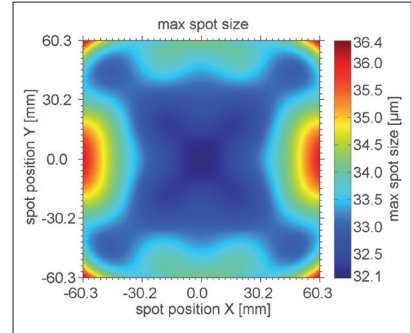


# F-Theta JENar™ Lens Series

## Large Scan Fields – JENar™ 160-1030...1080-170 + VIS

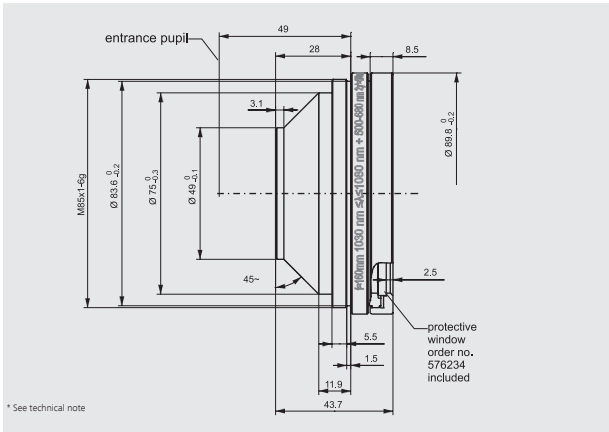
| Parameters                                    | JENar™ 160-1030...1080-170 + VIS<br>Compact F-Theta lens for large scan fields |
|---|--|
| Focal length:                                 | 160 mm   |
| Wavelength:                                   | 1030...1080 nm; T@500...680 nm > 85 %  |
| Scan field ( X x Y ); Ø:                      | (120 mm x 120 mm); 170 mm  |
| Diagonal scan angle:                          | 60°  |
| Back working distance:                        | 178.4 mm   |
| Flange focus distance:                        | 194.1 mm   |
| Input beam Ø 1/e <sup>2</sup> :               | 10 mm  |
| Focus size Ø 1/e <sup>2</sup> :               | 31 µm  |
| a1:   | 13 mm  |
| a2:   | 42.5 mm  |
| Telecentricity (only F-Theta   with scanner): | 17.1°   17.2°  |
| Group delay dispersion (GDD)*:                | 934 fs <sup>2</sup>  |
| LIDT coating pulsed; CW*:                     | not available yet  |
| LIDT system pulsed; CW*:                      | not available yet  |
| Weight:                                       | 0.383 kg   |
| Order Number::                                | <b>601914</b>  |

### Spot properties

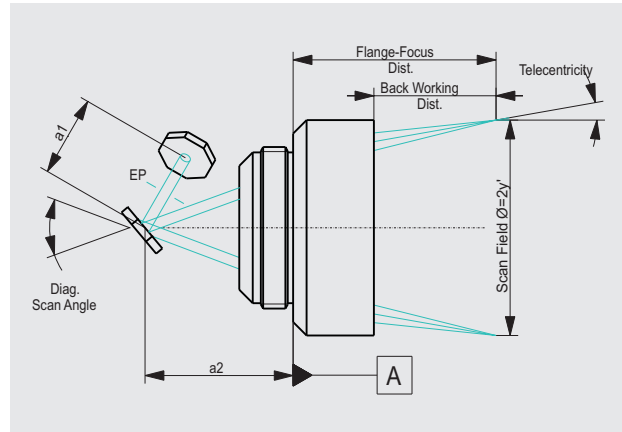


### Specifications

#### JENar™ 160-1030...1080-170 + VIS



### Definition of geometrical parameters



JENar®: Registered in EU, CN, JP, SG, US | F-Theta: Registered Design in EU, CN, KR, JP, SG, IN, HK, TW

The data given are nominal values for the specified application parameters. Jenoptik provides Zemax® BlackBox files for simulating application results for customized parameters (e.g. wavelength, scanner geometry, beam diameter, ...).  
Back working distance, Flange focus distance, and focal length vary by ± 1.5 % due to manufacturing variances.

It is our policy to constantly improve the design and specifications. Accordingly, the details represented herein cannot be regarded as final and binding.

