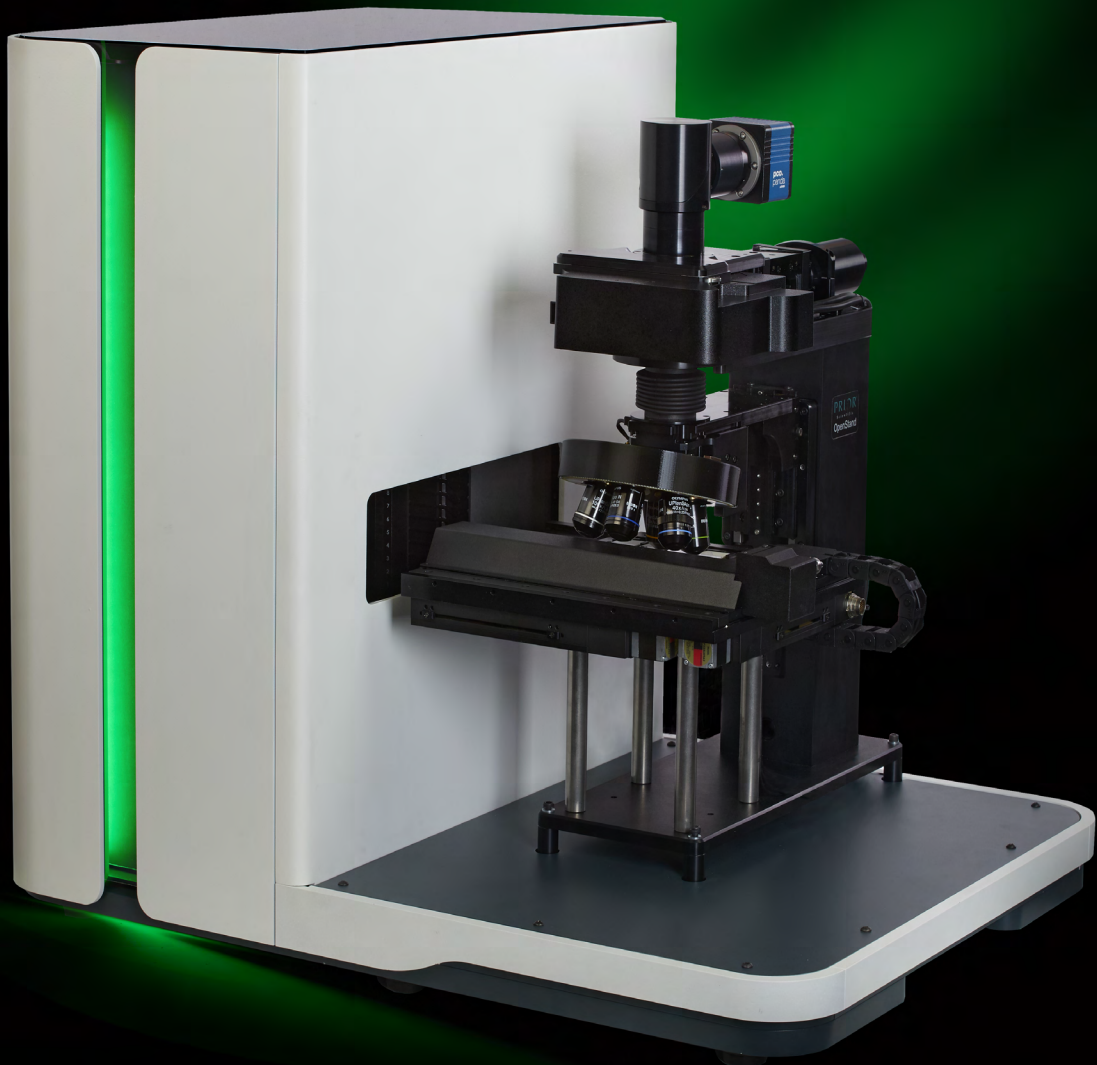


Prior SL160

Slide loader for OEM
and custom solutions



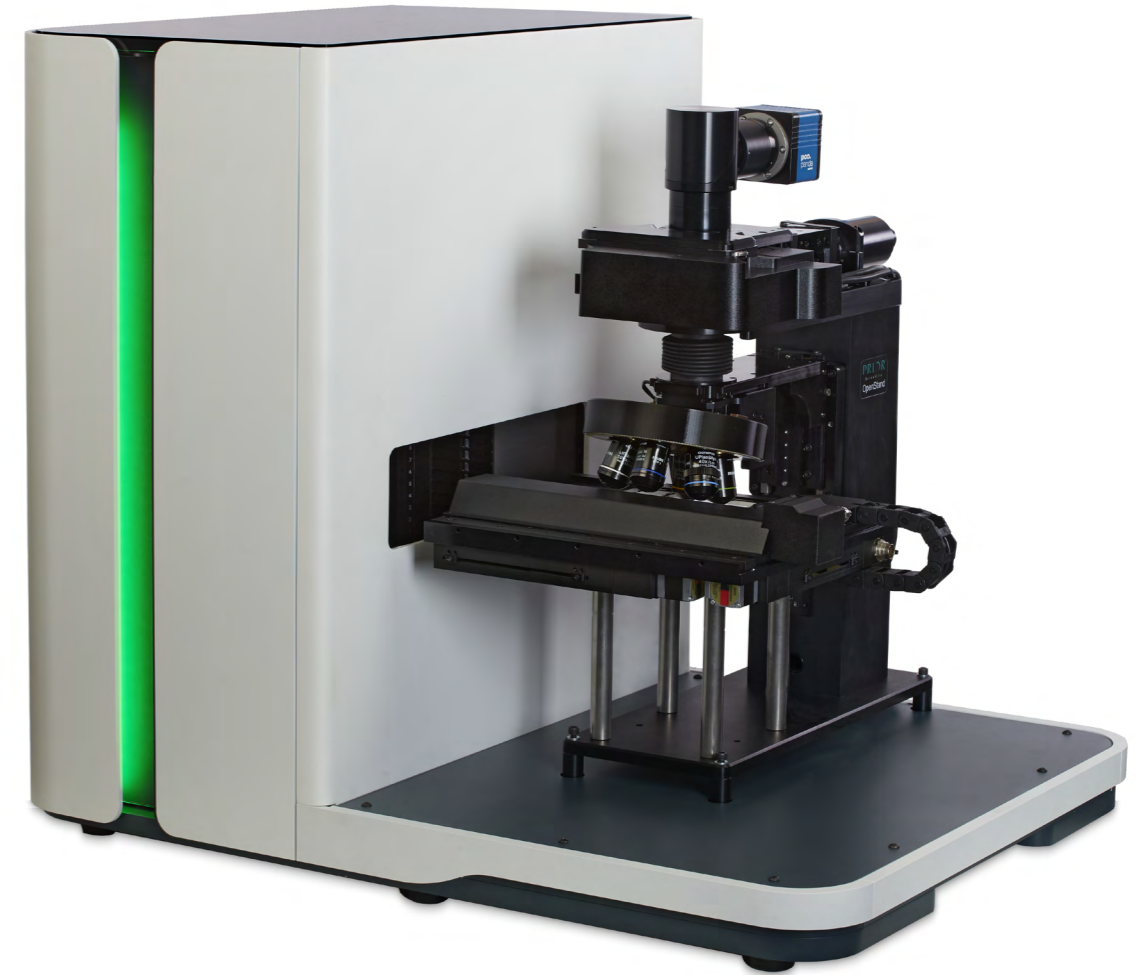
Combining reliability and performance with ease of use

Speed up your work with reliable sample handling

Prior SL160, a new platform for automated slide loading

The Prior SL160 Slide Loader is a fast and easy-to-use system to automate your slide scanning process. Prior has over 20 years of experience in slide loading and the SL160 has been designed from the ground up for the ultimate in robustness and reliability. This next-generation slide loading system has fully integrated sensors and encoders. Extensive life testing has proven its reliability in loading over one million slides.

The SL160 has a high capacity of 160 slides. Its open system architecture allows you to use a wide variety of microscopes and optics. It is the perfect platform to build your applications for imaging high volumes of slides with precision and reliability.

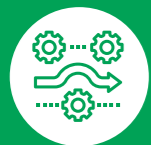


Advantages of the SL160 Slide Loader



High capacity

160 slides capacity allows long periods of unattended use



High throughput

Slide holders hold 4 slides to minimize the loading and scanning times



Protected samples

Slides are secured in slide holders without contact with moving parts



Easy to integrate

The SL160 uses Prior's ProScan® controls and comes with a full SDK



Tailored to your application

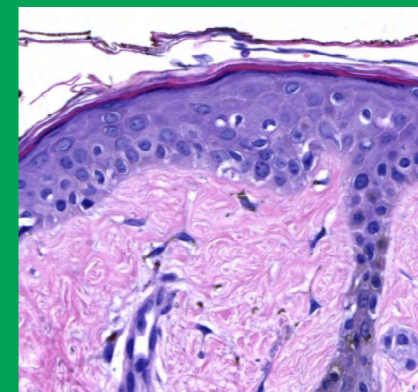
Compatible with the OpenStand® or fully customized to your optics and accessories



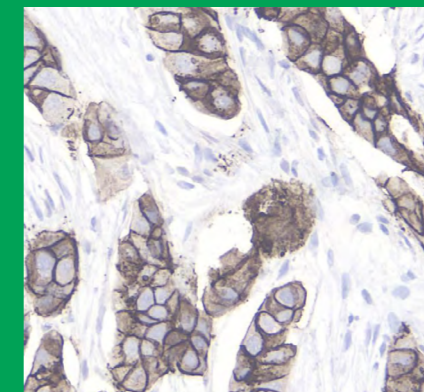
Fast scanning and acquisition

Robotics load and unload sample holders quickly

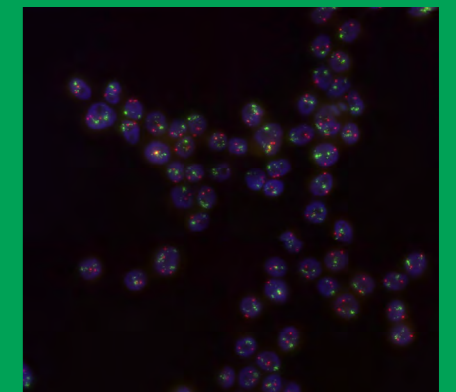
Flexible for many applications



Digital pathology research



Cancer and stem cell research



Genetics

User-friendly automation

Designed for maximum slide protection

The precision slide handling in the SL160 minimizes the manual loading time while protecting and keeping the slides safe. This innovative design completely protects and supports each slide to virtually eliminate any chance of mishandling or damaging the samples. The slide holders are also cost-effective enough to use for slide storage. The moving system never touches the slides and integrated sensors monitor the slide loading workflow.

Fully integrated system

With the SL160 Slide Loader, you get a fully configured slide loader that is easily integrated with your software. The loader interfaces with the Prior OpenStand microscope or your own microscope. The loader system uses Prior's standard ProScan controls and comes with a complete and open software development kit, making it easy to integrate into your system.



The new slide holder design to keep your samples safe

The SL160 slide holders are simple to load, economical, and suitable for long-term slide storage. They securely hold the slides to the plate with several features that prevent slides from falling through or being damaged. The slide holder can hold four 26 x 76 mm slides or two 52 x 76 mm slides.

The system comes with an optional slide assistance platform that provides effortless loading and unloading of slides.



Fast acquisition

The SL160 stage comes with an integral LED illuminator for slide preview. This low magnification preview scan quickly locates the areas of interest, so you only scan what is necessary.

Scanning only the areas of interest minimizes the file size and the scan times of high resolution, high magnification applications.



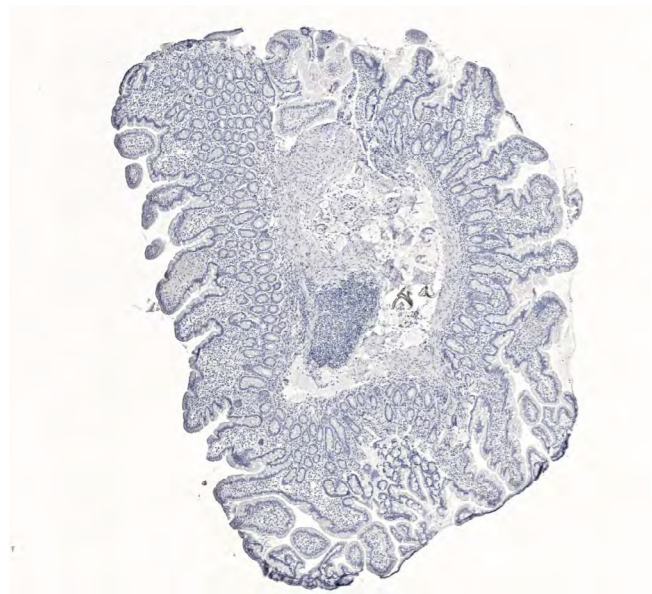
Slide hotels designed for high throughput

Each slide hotel holds 20 slide holders, and the slide loader fits two slide hotels. The robotic mechanism in the loader transfers the slide holders from the hotels without touching the individual slides, ensuring slide safety and integrity.

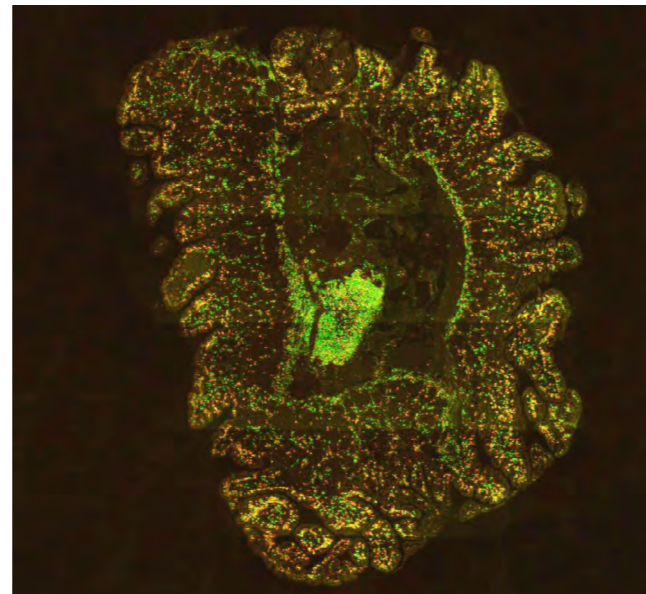
Safe transfer between bench and the loader

A retaining mechanism within the hotels maintains a firm grip on your samples, keeping them safe during transfer to and from the SL160 loader.

Tailored to your application



Stitched brightfield image



Stitched fluorescence image

Get the flexibility of OpenStand

Different applications have different needs to capture the information on the samples. To get maximum flexibility, you can combine SL160 Slide Loader with Prior's OpenStand. With OpenStand, you get a fully motorized and configurable microscope system, with only the options you need for your application.

Customization starts with selecting the right OpenStand base system for your application. You can tailor your microscope with suitable optics and illumination; brightfield and fluorescence options are available. You can use your favorite optics and accessories with the OpenStand.

Technical specifications

System specifications

| | | |
|---------------------------|--|--|
| Capacity | <ul style="list-style-type: none"> • 160 slides • Four 76 x 26 x 1 mm slides in each slide holder • 20 slide holders per slide hotel x 2 hotels | <ul style="list-style-type: none"> • 80 slides • Two 76 x 50 x 1 mm slides in each slide holder • 20 slide holders per slide hotel x 2 hotels |
| Load time | 10 seconds, 15 seconds with slide preview | |
| Scan time | Typically under 60 seconds (scan area 15x15 mm, 20x magnification) | |
| Microscope Compatibility* | <ul style="list-style-type: none"> • Prior OpenStand • Leica DM6 • Nikon Ni • Olympus BX63 • Zeiss AxioImager2 • Others available upon request | |
| Footprint | 850 x 650 x 710 mm / 33.5 x 25.6 x 28 in (W x L x H) | |
| Weight | Slide loader base unit: approx. 41 kg Covers: approx. 33 kg Stage: approx. 4 kg OpenStand: approx. 11 kg | |

Stage specifications

| | |
|------------------------------------|---|
| Mean uni-directional repeatability | +/- 0.2 μ m |
| Minimum step size | 40 nm (20 nm with 1 mm pitch ball screw) |
| Recommended speed | 40 mm/s (20 mm/s with 1 mm pitch ball screw) |
| Maximum speed | 100 mm/s (50 mm/s with 1 mm pitch ball screw) |
| Metric accuracy | 0.2 μ m/mm |
| Ball screw pitch | 2 mm (optional 1 mm pitch) |
| Motor type | 200 step/rev |
| Encoders | Optional 100 nm resolution |

*Microscopes must have a fixed stage or must be able to reliably return to a fixed Z position for loading and unloading slides to the stage.

Contact us

for more information on SL160 Slide Loader
prior.com/get-a-quote or email: inquiries@prior.com.

PRIOR[®]

Scientific

 [prior.com](https://www.prior.com)
 [linkedin.com/company/prior-scientific](https://www.linkedin.com/company/prior-scientific)
 [@PriorScientific](https://twitter.com/PriorScientific)

UNITED KINGDOM

Prior Scientific Instruments Ltd.
Units 3-4 Fielding Industrial Estate
Wilbraham Road, Fulbourn
Cambridge, CB21 5ET
United Kingdom
Email: inquiries@prior.com
Phone: +44 (0)1223 881711

U.S.A.

Prior Scientific, Inc.
80 Reservoir Park Drive
Rockland, MA. 02370
U.S.A.
Email: info@prior.com
Phone: 781.878.8442

GERMANY

Prior Scientific Instruments GmbH
Maria-Pawlowna-Str. 4
07743 Jena, Germany
Email: jena@prior.com
Phone: +49 (0)3641 242 010

JAPAN

Prior Scientific KK
Kayabacho 3rd Nagaoka Bldg 10F,
2-7-10, Nihonbashi Kayabacho, Chuo-Ku,
Tokyo103-0025, Japan
Email: info-japan@prior.com
Phone: 03-5652-8831

CHINA

Room 1812, Honghai Building,
72 Xingdu Street, Suzhou Industrial Park,
Suzhou, 215000, China
Email: info-china@prior.com
Phone: +86 (0)512 6617 5866

