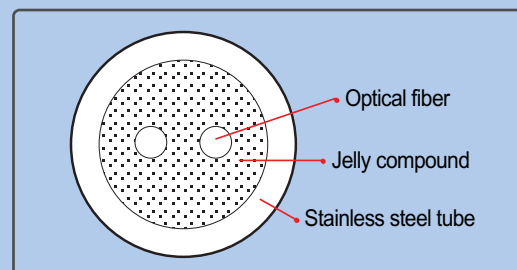
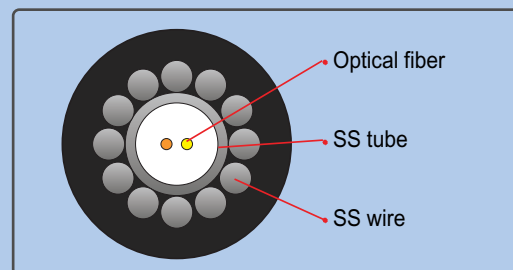


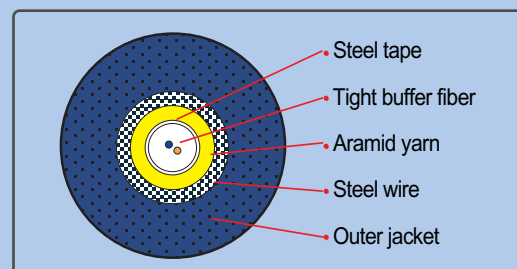
Sensing Cables



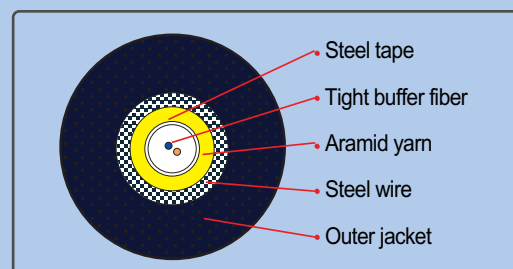
Stainless steel loose tube type



Stainless steel wire armored type



Steel tape and wire armored type



Spiral steel type



DTS Series



TS3000



TS3000M



FD3000

Rack System

LEA-TS3000-02

Distributed Temperature Sensing System [DTS]

www.fiberpro.com

TS3000



Distributed Temperature Sensing System [TS3000]

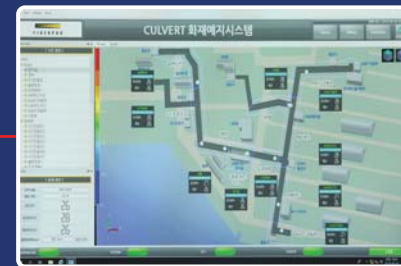
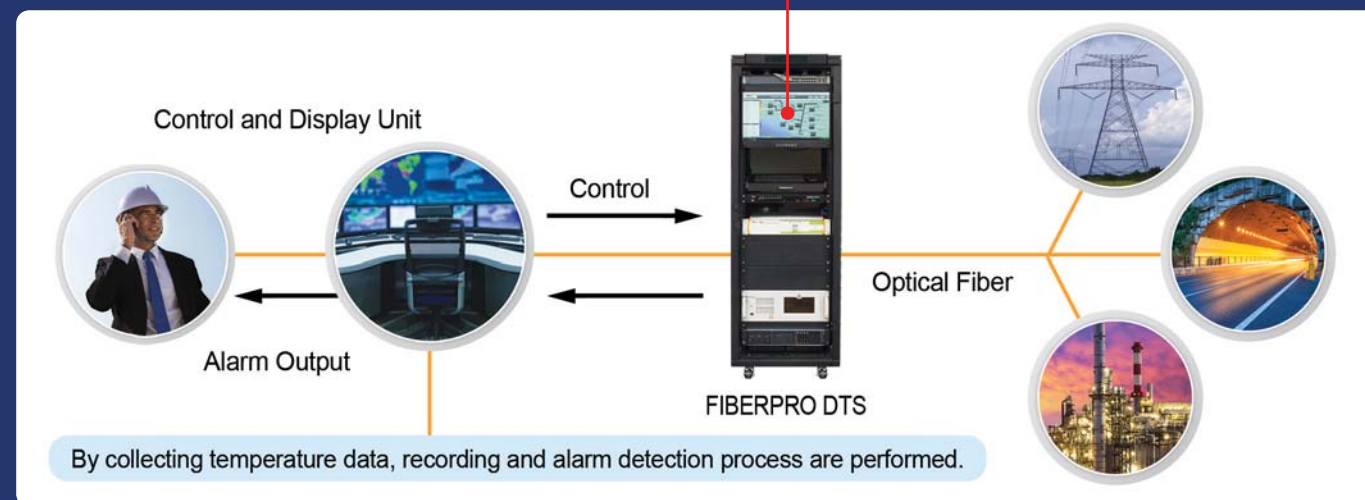
www.fiberpro.com

FIBERPRO's Distributed Temperature Sensing (DTS) System, TS3000, measure ambient temperatures along the entire optical fiber cable which is functioning as linear sensor. TS3000 provides excellent flexibility to meet client s requirements in various applications.

Features

- Raman scattering based DTS
- Max. 16 channels.
- High temp. accuracy.
- Wide temp. sensing range.
- Insensitive to the electromagnetic interference (EMI)

System Configuration



Applications

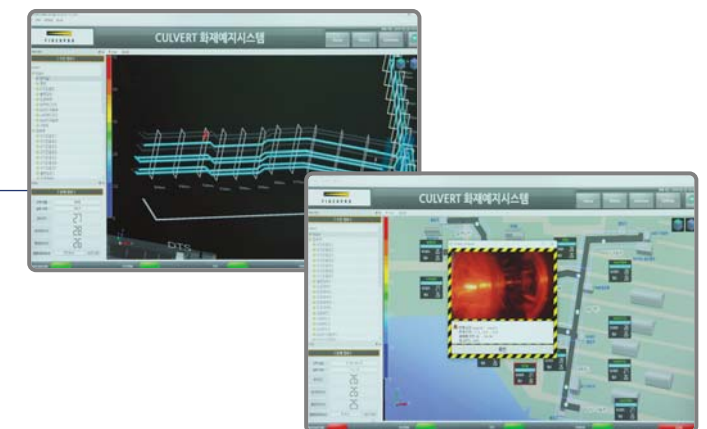
- Tunnel & Large facility fire surveillance
- Power plant & Tower temperature monitoring
- Factory temperature state monitoring
- Oil & Gas pipeline surveillance of leaks
- Geothermal temperature monitoring
- Others



Specifications

Performance	
Distance Range	5 km, 10 km ⁰⁾
Measurement Time	10 ~ 600 sec
Temperature Resolution (1 σ)	< 0.5 °C ¹⁾
Temperature Accuracy	< ± 2 °C (P to P) ²⁾
Minimal Spatial Resolution	< 2 m @ 2.3 km
Minimum Sampling Interval	0.5 m, 1 m
Sensing Temperature Range	-200 °C ~ +700 °C ³⁾
Hardware	
Number of Channel	1, 2, 4, 8, 13, 16
Sensing Fiber Type	MMF 50 / 125 um (Graded index)
Connector Type	E-2000/APC, FC/APC or SC/APC
Operating Temperature	-20 ~ +60 °C
Storage Temperature	-40 ~ +85 °C ⁴⁾
Electrical Power	AC 100 ~ 240 V, < 250W Typ.
Dimensions (W x D x H)	600 mm x 1000 mm x 1800 mm (Rack cabinet) 445 mm x 435 mm x 177 mm (TS3000 only)
Weight	< 10 kg
Certification	KC (including KFI), CE
Interfaces	LAN, RS-232 (Data reading only)

- 0) Ask us for longer distance
- 1) Measurement time 600 sec, standard deviation over distance
- 2) Measurement time 60 sec
- 3) Depending on sensing fiber coating material
- 4) Non-condensing



Ordering Code

TS3000 - (1) - (2) - (3) - (4)

1. Distance \Rightarrow 5 km(5), 10 km(10)
2. The number of channel \Rightarrow 1ch(1), 2ch(2), 4ch(4), 8ch(8), 13ch(13), 16ch(16)
3. Port location \Rightarrow Front(F), Rear(R)
4. Connector type \Rightarrow E-2000/APC(E/A), FC/APC(F/A), SC/APC(S/A)