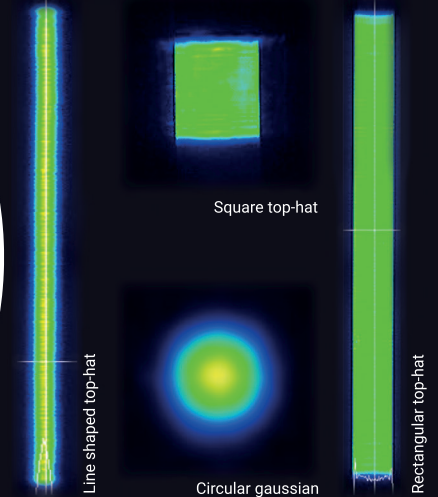
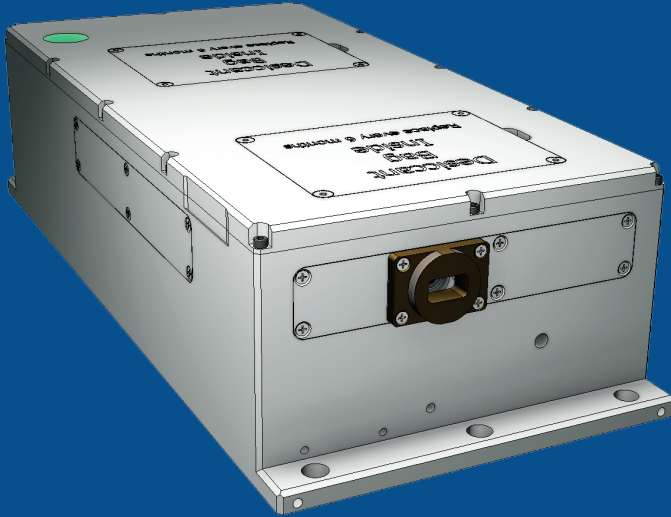


BX-Series

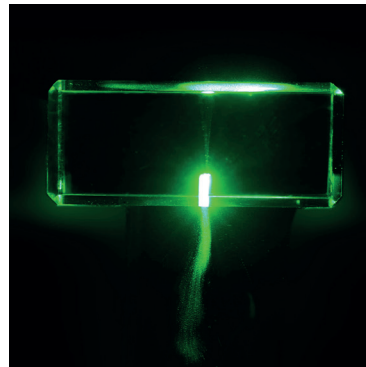
Short Pulse InnoSlab Lasers

edgewave



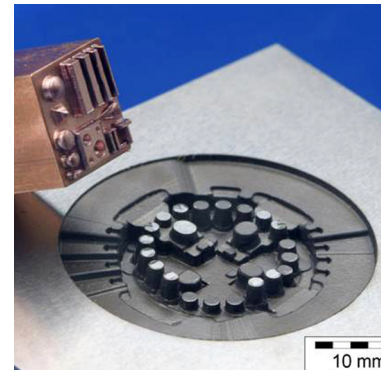
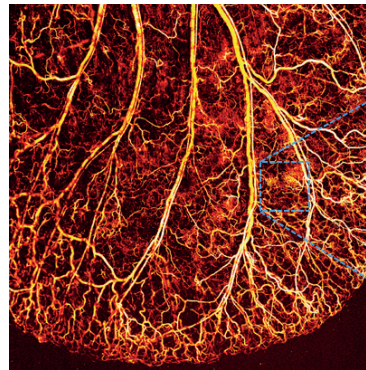
Unique Features

- short pulse
- high pulse energy
- high peak power
- high repetition rate
- compact setup
- flexibility on crystal choice
- tailored beam profile



Favourable Applications

- glass milling, drilling and cutting
- ablation, structuring and scribing
- high speed subsurface marking
- tool making and rapid prototyping
- pumping of dye lasers
- solar cell processing
- high resolution marking



Overview of BX-Series

| Model | BXxx-1 | BXxx-2 |
|------------------------------------|---------|---------|
| Wavelength [nm] | IR | Green |
| Highest beam quality M^2 | 1.1 | 1.1 |
| Max. average power [W] | 80 | 40 |
| Max. repetition rate [kHz] | 100 | 100 |
| Max. pulse energy [mJ] | 7 | 3 |
| Min. pulse width [ns] | 6 | 5 |
| Energy stability [%] rms | 1 | 2 |
| Timing stability [ns] | 2 | 2 |
| Polarisation | > 100:1 | > 100:1 |
| Beam ellipticity (far field) [%] | < 10 | < 10 |
| Diameter at window [mm] | 3 | 3 |
| Full divergence angle [μ rad] | 500 | 250 |
| Point stability [μ rad] | < 50 | < 50 |
| Warm-up time from cold start [min] | 15 | 20 |
| Warm-up time from standby [min] | 10 | 15 |

Utility & Ambient Requirements

| | |
|-----------------------------------|--------------------------------|
| Power supply | 90 V–264 V, 50/60 Hz |
| Power, maximum | 1.4 kW |
| Chiller | 230, 208, 115, 100 V, 50/60 Hz |
| Power, maximum | 1.4 kW |
| Operating ambient temperature | 15 °C–35 °C |
| Relative humidity, non-condensing | 10 %–80 % |

Dimensions & Weights

| | |
|----------------------|--------------------------|
| Laser head | 420 mm x 190 mm x 110 mm |
| Supply incl. chiller | 19" x 8 HU x 650 mm |
| Laser head | 17 kg |
| Supply incl. chiller | 56 kg |

EdgeWave follows a policy of continuous product improvement. Specifications are subject to change without notice.

