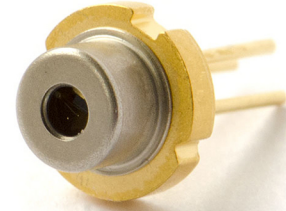


TG 418-S

Visible and UV laser diodes in TO56 package



Features:

Optical output power: 50mW (T_{case}=20°C)

Peak wavelength: 418 +/- 2 nm @RT

Efficient radiation source for cw and pulsed operation

Single transverse mode semiconductor laser

Absolute maximum ratings

Item	Symbol	Absolute Maximum Ratings	Unit
Allowable Reverse Current	I _r	1	[uA]
PD Reverse Voltage	V _r	5	[V]
Storage Temperature	T _{storage}	-10~85	[°C]
Operating Case Temperature	T _C	0~60*	[°C]

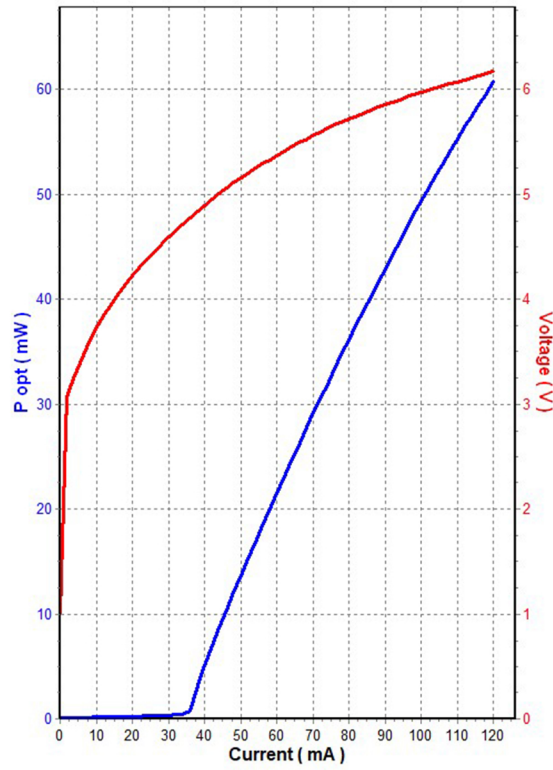
Electric/Optical Characteristics

Item	Condition	Symbol	Value	Unit
Optical Output Power	CW	P _O	50	[mW]
Peak Wavelength	P _O =50mW	λ _p	418 +/-2	[nm]
Threshold Current	CW	I _{th}	30-60	[mA]
Operating Current	P _O =50mW	I _{op}	90 - 130	[mA]
Temperature wavelength shift	P _O =50mW	DI	0.05	[nm/deg]
Beam divergence - Fast axis			32	deg
Beam divergence - Slow axis			7	deg

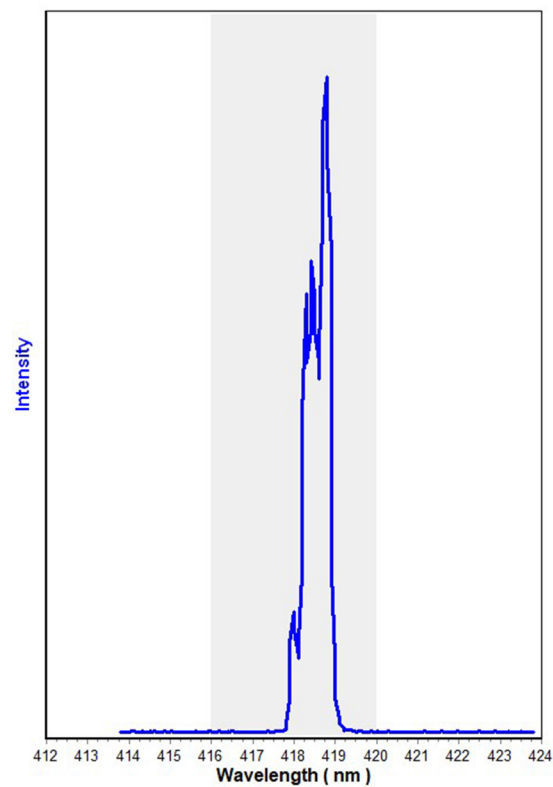
*Please notice that the laser diode is designate to operate at room temperature (20 deg. C). The temperature increase leads to the shorter lifetime and lower output current.

TG 418-S

Optical output power

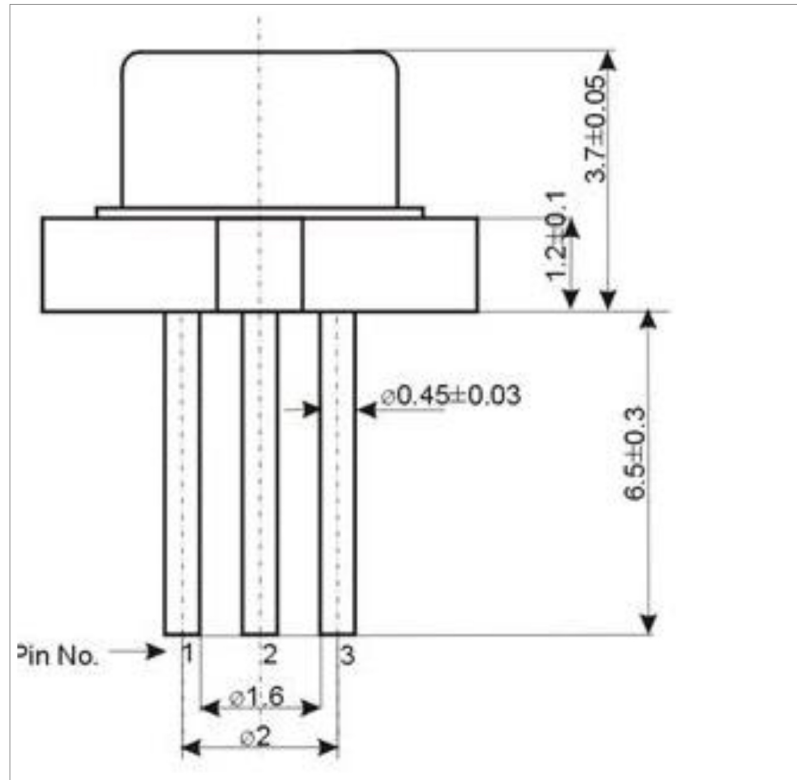


Wavelength



TG 418-S

Physical dimensions



Electrical connections

Laser is connected to isolated pins "1" and "3". Pin "2" is connected with the case and not active.

