

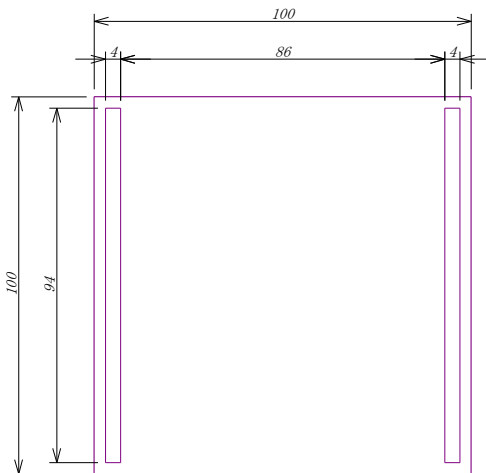
Transparent Heater Design, Specifications and Instruction Manual

Issue date: Oct.1,2019

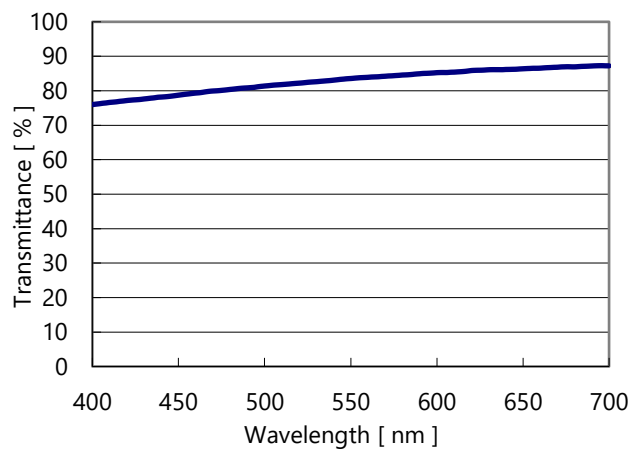
Specifications

Product Name		GMT-100□-12	
Voltage	12V	Substrate Material	Float glass (non-polished sodalime)
Energy Consumption	5.5W \pm 1.1W	Substrate Thickness	1.1 mm
Rising Temperature	26.5°C \pm 4.5°C ※1	Electrode Material	Metal
Interterminal Resistance	27 Ω \pm 6 Ω	Insulation Treatment	N/A
Heating Area	94 mm \times 86 mm		

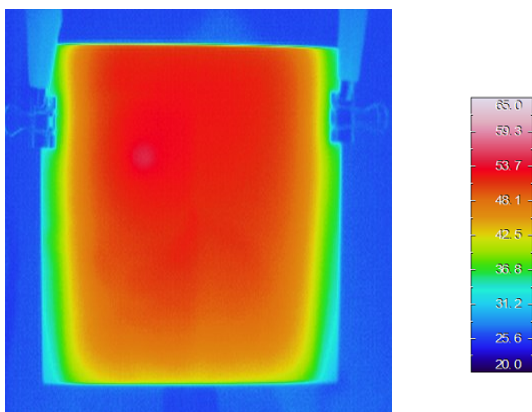
Product Size



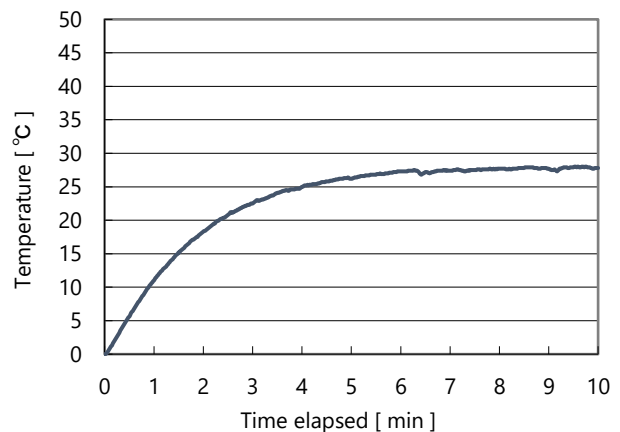
Transmittance Characteristics



Thermography Image



Heating Data /Reference



Important Notice:

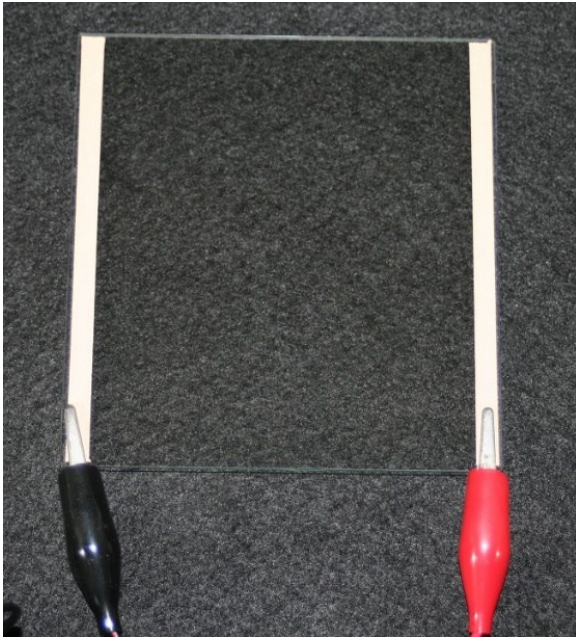
Please note that we do not conduct PSE compliance tests on any of our products. The heater is designed for evaluation purposes only. The product specifications are subject to change without notice.

Warranty Period: 1 month after receipt of product.

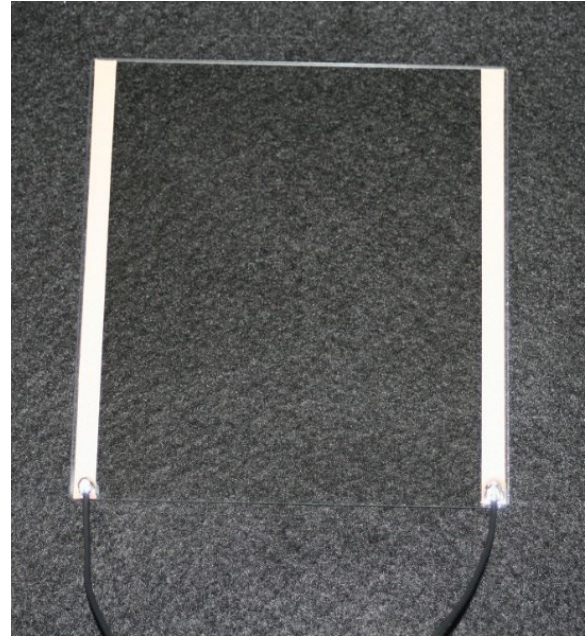
How to attach Lead Wire

We suggest connecting electrodes with crocodile clips or by soldering. No need to distinguish Anode/Cathode.

Crocodile clip



Soldering



CAUTION - Handle with Care

- Do not dismantle the heater. This may result in irregular operation and could cause injury.
- Do not use near water at the risk of short circuit or electric shock.
- The surface of the heater must not be scratched. This may result in irregular operation and/or damage to the heater.
- Do not touch the heating surface while the power is ON. The heater is not insulated and contact with the surface may result in short circuit and/or electric shock.
- Keep heater away from all flammable liquids and items such as aerosol sprays and lighters. Excessive heat may cause fire or explosion.

DISCLAIMER GEOMATEC shall not be held liable in any way for defects or damages resulting from misuse or mishandling of our products by Customers.

GEOMATEC Co., Ltd

Yokohama Landmark Tower, 9th Fl.
2-2-1 Minato Mirai, Nishi-ku Yokohama 220-8109 JAPAN
Visit our website for inquiry: www.geomatec.com/contact-us/

GEOMATEC
CREATE COATING SOLUTIONS